

FGC35-70K Series

LPG Counterbalance • 4 Wheel Cushion Tyres
3.5 – 7.0 tonnes

Rugged and powerful... refined and clean

With its powerful Mitsubishi engine, heavy duty masts and rugged, ultra-stable construction, you can rely on this forklift truck to deliver high productivity – day after day, year after year. At the same time, you will enjoy the benefits of a refined driving experience, low noise and low emissions.

Use of cushion tyres has allowed the designers to develop a compact truck with an extremely low centre of gravity, offering high residual capacities. The tyres give excellent traction on smooth surfaces and reduce energy consumption. To gain the utmost advantage from these features, operators are provided with a comfortable, ergonomic operating compartment and smooth, precise controls.



FGC35K
FGC40K
FGC40K STC
FGC45K SWB
FGC45K STC
FGC55K
FGC55K STC
FGC60K
FGC70K
FGC70K STC

Frame and body

- **Advanced frame and overhead guard design** results in an unusually low centre of gravity, great stability, high productivity and optimum driver protection.
- **Lead-filled counterweights** add extra manoeuvrability by allowing reduction in truck length (FGC40K STC, FGC55 STC and FGC70K STC).

Mast and fork assembly

- **Heavy duty masts** give strength and durability for optimum performance.
- **Clear-view construction** allows maximum visibility through mast, fork carriage and overhead guard – for maximum operator safety and output.

Drive

- **Advanced LPG engine** with engine management system and 3-way catalytic converter delivers precisely controlled performance, high fuel economy and low emissions.

FGC35-70K Series

LPG Counterbalance • 4 Wheel Cushion Tyres • 3.5 – 7.0 tonnes

| Characteristics | | | | | | |
|------------------|--|----------------|------------------|--|-----------------|-----------------|
| 1.1 | Manufacturer (abbreviation) | | | | Mitsubishi | Mitsubishi |
| 1.2 | Manufacturer's model designation | | | | FGC35K | FGC40K |
| 1.3 | Power source: (battery, diesel, LP gas, petrol) | | | | LP gas | LP gas |
| 1.4 | Operator type: pedestrian, (operator) standing, seated | | | | Seated | Seated |
| 1.5 | Load capacity | Q | kg | | 3500 | 4000 |
| 1.6 | Load centre distance | c | (mm) | | 500 | 500 |
| 1.8 | Load distance | x | (mm) | | 450 | 450 |
| 1.9 | Wheelbase | y | (mm) | | 1575 | 1575 |
| Weights | | | | | | |
| 2.1 | Truck weight, without load/including battery (simplex mast, lowest lifting height) | | kg | | 5240 | 5570 |
| 2.2 | Axle loading with maximum load, front/rear (simplex mast, lowest lifting height) | | kg | | 7670 / 1030 | 8440 / 1160 |
| 2.3 | Axle loading without load, front/rear (simplex mast, lowest lifting height) | | kg | | 2050 / 3150 | 2025 / 3575 |
| Wheels and Tyres | | | | | | |
| 3.1 | Tyres: V=solid, L=pneumatic, SE=solid pneumatic – front/rear | | | | V/V | V/V |
| 3.2 | Tyre dimensions, front | | | | 22x9x16 | 22x9x16 |
| 3.3 | Tyre dimensions, rear | | | | 18x7x12.1 | 18x7x12.1 |
| 3.5 | Number of wheels, front/rear (x=driven) | | | | 2X/2 | 2X/2 |
| 3.6 | Track width (centre of tyres), front | b10 | (mm) | | 940 | 940 |
| 3.7 | Track width (centre of tyres), rear | b11 | (mm) | | 980 | 980 |
| Dimensions | | | | | | |
| 4.1 | Mast tilt, forwards/backwards | α/β | ° | | 5 / 10 | 5 / 10 |
| 4.2 | Height with mast lowered (see tables) | h1 | (mm) | | 2120 | 2120 |
| 4.3 | Free lift (see tables) | h2 | (mm) | | 150 | 150 |
| 4.4 | Lift height (see tables) | h3 | (mm) | | 3000 | 3000 |
| 4.5 | Overall height with mast raised | h4 | (mm) | | 4270 | 4270 |
| 4.7 | Height to top of overhead guard | h6 | (mm) | | 2205 | 2205 |
| 4.8 | Seat height | h7 | (mm) | | 1200 | 1200 |
| 4.12 | Tow coupling height | h10 | (mm) | | | |
| 4.19 | Overall length | l1 | (mm) | | 3730 | 3770 |
| 4.20 | Length to fork face (includes fork thickness) | l2 | (mm) | | 2510 | 2550 |
| 4.21 | Overall width | b1/b2 | (mm) | | 1180 | 1180 |
| 4.22 | Fork dimensions (thickness, width, length) | s / e / l | (mm) | | 50 x 150 x 1220 | 50 x 150 x 1220 |
| 4.23 | Fork carriage to DIN 15 173 A/B/no | | | | 3A | 3A |
| 4.24 | Fork carriage width | b3 | (mm) | | 1125 | 1125 |
| 4.31 | Ground clearance under mast, with load | m1 | (mm) | | 100 | 100 |
| 4.32 | Ground clearance at centre of wheelbase, with load (forks lowered) | m2 | (mm) | | 150 | 150 |
| 4.33 | Working aisle width with 1000 x 1200mm pallets, crosswise | Ast | (mm) | | 3885 | 3935 |
| 4.34 | Working aisle width with 800 x 1200mm pallets, crosswise | Ast | (mm) | | 3685 | 3735 |
| 4.35 | Turning circle radius | Wa | (mm) | | 2235 | 2285 |
| 4.36 | Minimum distance between centres of rotation | b13 | (mm) | | | |
| Performance | | | | | | |
| 5.1 | Travel speed, with/without load | | km/h | | 19.0 / 19.5 | 19.0 / 19.5 |
| 5.2 | Lifting speed, with/without load | | m/s | | 0.54 / 0.57 | 0.54 / 0.57 |
| 5.3 | Lowering speed, with/without load | | m/s | | 0.55 / 0.50 | 0.55 / 0.50 |
| 5.5 | Rated drawbar pull, with/without load | | N | | | |
| 5.6 | Maximum drawbar pull, with/without load (5 min short duty) | | N | | | |
| 5.7 | Gradeability, with/without load | | % | | 37.0 | 33.0 |
| 5.8 | Maximum gradeability, with/without load | | % | | 42 / 24 | 37 / 21 |
| 5.9 | Acceleration time (10 metres) with/without load | | s | | | |
| 5.10 | Service brakes (mechanical/hydraulic/electric/pneumatic) | | | | Hydraulic | Hydraulic |
| IC Engine | | | | | | |
| 7.1 | Manufacturer / Type | | | | 69 | GM V6 |
| 7.2 | Rated output to ISO 1585 | | kW | | 2450 | 69 |
| 7.3 | Rated speed to DIN 70 020 | | rpm | | 4300 | 2450 |
| 7.4 | Number of cylinders / cubic capacity | | /cm ³ | | | 4300 |
| 7.5 | Fuel consumption according to VDI cycle | | l/h / kg/h | | | |
| Miscellaneous | | | | | | |
| 8.1 | Type of drive control | | | | Powershift | Powershift |
| 8.2 | Maximum operating pressure for attachments | | bar | | 155 | 155 |
| 8.3 | Oil flow for attachments | | l/min | | 95 | 95 |
| 8.4 | Noise level, mean value at operator's ear | | dB(A) | | 83.5 | 83.5 |
| 8.5 | Towing coupling design / DIN type, ref. | | | | Pin | Pin |

Continuing improvement may lead to changes in these specifications.

| | | | | | | |
|--|--------------------------|--------------------------|--------------------------|----------------------|--------------------------|----------------------|
| | Mitsubishi FGC40K STC | Mitsubishi FGC45K SWB | Mitsubishi FGC45K STC | Mitsubishi FGC55K | Mitsubishi FGC55K STC | Mitsubishi FGC60K |
| | LP gas | LP gas | LP gas | LP gas | LP gas | LP gas |
| | Seated | Seated | Seated | Seated | Seated | Seated |
| | 4000 | 4500 | 4500 | 5500 | 5500 | 6000 |
| | 500 | 600 | 600 | 600 | 600 | 600 |
| | 450 | 465 | 465 | 480 | 480 | 530 |
| | 1575 | 1575 | 1575 | 1780 | 1780 | 1830 |
| | 5655 | 6470 | 6510 | 7190 | 7550 | 8760 |
| | 8310 / 930 | 9520 / 1480 | 9755 / 1250 | 11260 / 1140 | 11435 / 1535 | 13040 / 1760 |
| | 2240 / 3370 | 1925 / 4575 | 2080 / 4385 | 2425 / 4775 | 2665 / 4865 | 3300 / 5500 |
| | V/V | V/V | V/V | V/V | V/V | V/V |
| | 22x9x16 | 22x9x16 | 22x9x16 | 22x12x16 | 22x12x16 | 28x12x22 |
| | 18x7x12.1 | 18x7x12.1 | 18x7x12.1 | 18x8x12.1 | 18x8x12.1 | 22x8x16 |
| | 2X/2 | 2X/2 | 2X/2 | 2X/2 | 2X/2 | 2X/2 |
| | 940 | 940 | 940 | 1015 | 1015 | 1130 |
| | 980 | 980 | 980 | 965 | 965 | 1160 |
| | 5 / 10 | 5 / 10 | 5 / 10 | 5 / 10 | 5 / 10 | 6 / 9 |
| | 2120 | 2120 | 2120 | 2120 | 2120 | 2150 |
| | 150 | 160 | 160 | 160 | 160 | 165 |
| | 3000 | 2850 | 2850 | 2840 | 2840 | 2295 |
| | 4270 | 4120 | 4120 | 4120 | 4120 | 3580 |
| | 2205 | 2205 | 2205 | 2205 | 2205 | 2255 |
| | 1200 | 1200 | 1200 | 1200 | 1200 | 1285 |
| | 3630 | 3840 | 3715 | 4130 | 3875 | 4170 |
| | 2411 | 2620 | 2496 | 2910 | 2655 | 2950 |
| | 1180 | 1180 | 1180 | 1320 | 1320 | 1440 |
| | 50 x 150 x 1220 | 50 x 150 x 1220 | 50 x 150 x 1220 | 60 x 150 x 1220 | 60 x 150 x 1220 | 65 x 150 x 1220 |
| | 3A | 3A | 3A | 4A | 4A | 4A |
| | 1125 | 1125 | 1125 | 1125 | 1125 | 1295 |
| | 100 | 100 | 100 | 100 | 100 | 100 |
| | 150 | 150 | 150 | 150 | 150 | 200 |
| | 3741 | 4005 | 3899 | 4230 | 4030 | 4300 |
| | 3541 | 3805 | 3699 | 4030 | 3830 | 4100 |
| | 2091 | 2340 | 2234 | 2550 | 2350 | 2570 |
| | 19.0 / 19.5 | 18.5 / 19.5 | 18.5 / 19.5 | 18.0 / 19.5 | 18.0 / 19.5 | 21.0 / 23.0 |
| | 0.54 / 0.57 | 0.39 / 0.42 | 0.39 / 0.42 | 0.39 / 0.42 | 0.39 / 0.42 | 0.36 / 0.39 |
| | 0.55 / 0.50 | 0.44 / 0.41 | 0.44 / 0.41 | 0.44 / 0.41 | 0.44 / 0.41 | 0.54 / 0.39 |
| | 32.0 | 27.0 | 27 | 22.5 | 22.0 | 24.5 |
| | 36 / 21 | 30 / 17 | 30 / 17 | 26.0 / 20.0 | 25.0 / 21.0 | 30.0 / 22.0 |
| | Hydraulic | Hydraulic | Hydraulic | Hydraulic | Hydraulic | Hydraulic |
| | GM V6 | GM V6 | GM V6 | GM V6 | GM V6 | GM V6 |
| | 69 | 69 | 69 | 69 | 69 | 69 |
| | 2450 | 2450 | 2450 | 2450 | 2450 | 2450 |
| | 4300 | 4300 | 4300 | 4300 | 4300 | 4300 |
| | Powershift | Powershift | Powershift | Powershift | Powershift | Powershift |
| | 155 | 155 | 155 | 155 | 155 | 155 |
| | 95 | 95 | 95 | 95 | 95 | 115 |
| | 83.5 | 83.5 | 83.5 | 83.5 | 83.5 | 83.5 |
| | Pin | Pin | Pin | Pin | Pin | Pin |

| | |
|------------|------------|
| Mitsubishi | Mitsubishi |
| FGC70K | FGC70K STC |
| LP gas | LP gas |
| Seated | Seated |
| 7000 | 7000 |
| 600 | 600 |
| 530 | 530 |
| 1830 | 1830 |

| | |
|--------------|--------------|
| 9480 | 9920 |
| 14590 / 1910 | 15000 / 2030 |
| 3300 / 6200 | 3600 / 6400 |

| | |
|----------|----------|
| V/V | V/V |
| 28x12x22 | 28x12x22 |
| 22x8x16 | 22x8x16 |
| 2X/2 | 2X/2 |
| 1130 | 1130 |
| 1160 | 1160 |

| | |
|-------|-------|
| 6 / 9 | 6 / 9 |
| 2150 | 2150 |
| 165 | 165 |
| 2295 | 2295 |
| 3580 | 3580 |
| 2255 | 2255 |
| 1285 | 1285 |

| | |
|------|------|
| 4170 | 3950 |
| 2950 | 2730 |
| 1440 | 1440 |

| | |
|-----------------|-----------------|
| 65 x 150 x 1220 | 65 x 150 x 1220 |
| 4A | 4A |
| 1295 | 1295 |
| 100 | 100 |
| 200 | 200 |
| 4300 | 4200 |
| 4100 | 4000 |
| 2570 | 2470 |

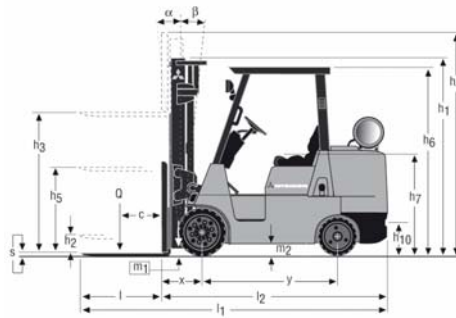
| | |
|-------------|-------------|
| 20.5 / 23.0 | 20.5 / 22.5 |
| 0.36 / 0.39 | 0.36 / 0.39 |
| 0.54 / 0.39 | 0.54 / 0.39 |

| | |
|-------------|-------------|
| 21.5 | 20.5 |
| 27.0 / 20.5 | 26.0 / 21.0 |

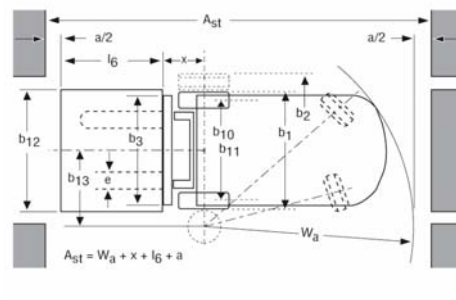
| | |
|-----------|-----------|
| Hydraulic | Hydraulic |
|-----------|-----------|

| | |
|-------|-------|
| GM V6 | GM V6 |
| 69 | 69 |
| 2450 | 2450 |
| 4300 | 4300 |

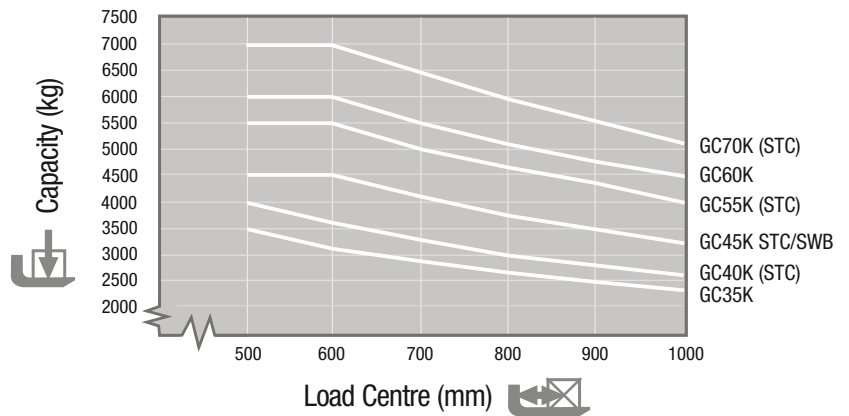
| | |
|------------|------------|
| Powershift | Powershift |
| 155 | 155 |
| 115 | 115 |
| 83.5 | 83.5 |
| Pin | Pin |



- h1 Height with mast lowered
- h2 Standard free lift
- h3 Lift height
- h4 Height with mast raised
- Q Lifting capacity, rated load
- c Load centre (distance)



- $A_{st} = W_a + x + l_6 + a$
- Ast = Working aisle width
- Wa = Turning radius
- a = Safety clearance
- = 2 x 100 mm
- l6 = Pallet length (800 or 1000 mm)
- b12 = Pallet width (1200 mm)



Mast Performance and Capacity

| FGC35K/FGC40K/FGC40K STC | | | | FGC35K | FGC40K | FGC40K STC | FGC45K SWB/FGC45K STC/FGC55K/FGC55K STC | | | | FGC45K SWB | FGC45K STC | FGC55K | FGC55K STC | |
|--------------------------|---------|---------|---------|------------|----------------|----------------|---|--|---------|---------|------------|----------------|----------------|----------------|----------------|
| Mast type | h3 (mm) | h1 (mm) | h4 (mm) | h2/h5 (mm) | Q @ c=500mm kg | Q @ c=500mm kg | Q @ c=500mm kg | h3 (mm) | h1 (mm) | h4 (mm) | h2/h5 (mm) | Q @ c=600mm kg | Q @ c=600mm kg | Q @ c=600mm kg | Q @ c=600mm kg |
| Simplex | 3050 | 2120 | 4250 | 150 | 3500 | 4000 | 4000 | 2890 | 2120 | 4090 | 160 | 4500 | 4500 | 5500 | 5500 |
| | 3350 | 2270 | 4550 | 150 | 3500 | 4000 | 4000 | 3350 | 2350 | 4550 | 160 | 4500 | 4500 | 5500 | 5500 |
| | 3750 | 2470 | 4950 | 150 | 3500 | 4000 | 4000 | 3550 | 2450 | 4750 | 160 | 4500 | 4500 | 5500 | 5500 |
| | 4050 | 2650 | 5250 | 150 | 3500 | 4000 | 4000 | 4050 | 2800 | 5250 | 160 | 4500 | 4500 | 5500 | 5500 |
| | 4550 | 2950 | 5750 | 150 | 3500 | 4000 | 4000 | 4550 | 3050 | 5750 | 160 | 4500 | 4500 | 5500 | 5500 |
| | 5050 | 3200 | 6250 | 150 | 3500 | 4000 | 3850 | 5050 | 3300 | 6250 | 160 | 4500 | 4500 | 5500 | 5350 |
| | 5300 | 3300 | 6500 | 150 | 3450 | 3600 | 3500 | 5300 | 3400 | 6500 | 160 | 4000 | 4000 | 5500 | 5250 |
| | 5550 | 3450 | 6750 | 150 | 2600 | 2650 | 2600 | 5550 | 3550 | 6750 | 160 | 2700 | 2700 | 4500 | 4500 |
| 6050 | 3700 | 7250 | 150 | 1400 | 1450 | 1400 | 6050 | 3800 | 7250 | 160 | 1000 | 1000 | 2600 | 2600 | |
| Duplex | 3050 | 2120 | 4250 | 920 | 3500 | 4000 | 4000 | 2850 | 2120 | 4050 | 895 | 4500 | 4500 | 5500 | 5500 |
| | 3280 | 2270 | 4480 | 1070 | 3500 | 4000 | 4000 | 3330 | 2350 | 4530 | 1125 | 4500 | 4500 | 5500 | 5500 |
| | 3700 | 2470 | 4900 | 1270 | 3500 | 4000 | 4000 | 3530 | 2450 | 4730 | 1225 | 4500 | 4500 | 5500 | 5500 |
| | 3960 | 2650 | 5160 | 1450 | 3500 | 4000 | 4000 | 4130 | 2800 | 5330 | 1575 | 4500 | 4500 | 5500 | 5500 |
| Triplex (*) | 4050 | 2000 | 5250 | 800 | 3500 | 4000 | 4000 | 4360 | 2120 | 5560 | 920 | 4500 | | | |
| | 4410 | 2120 | 5610 | 920 | 3500 | 4000 | 3950 | 4630 | 2210 | 5830 | 1010 | 4500 | | | |
| | 4650 | 2200 | 5850 | 1000 | 3500 | 4000 | 3850 | 4800 | 2350 | 6000 | 1150 | 4500 | | | |
| | 5100 | 2350 | 6300 | 1150 | 3400 | 3900 | 3750 | 5100 | 2450 | 6300 | 1250 | 4500 | | | |
| | 5310 | 2420 | 6510 | 1220 | 3350 | 3850 | 3700 | 5310 | 2520 | 6510 | 1320 | 4450 | | | |
| | 5550 | 2500 | 6750 | 1300 | 3300 | 3800 | 3650 | 5550 | 2600 | 6750 | 1400 | 4400 | | | |
| | 6050 | 2700 | 7250 | 1500 | 3000 | 3000 | 3000 | 6050 | 2800 | 7250 | 1600 | 3200 | | | |
| | 6550 | 2900 | 7750 | 1700 | 2650 | 2650 | 2650 | 6550 | 3000 | 7750 | 1800 | 2700 | | | |
| | 7050 | 3100 | 8250 | 1900 | 1650 | 1650 | 1650 | 7050 | 3200 | 8250 | 2000 | 1400 | | | |
| | | | | | | | | Triplex FGC45K / FGC55K / FGC55K STC (*) | | | | | | | |
| | | | | | | | | 4360 | 2120 | 5560 | 920 | | 4500 | 5500 | 5500 |
| | | | | | | | | 4630 | 2210 | 5830 | 1010 | | 4500 | 5500 | 5500 |
| | | | | | | | | 4800 | 2350 | 6000 | 1150 | | 4500 | 5500 | 5350 |
| | | | | | | | | 5100 | 2450 | 6300 | 1250 | | 4450 | 5500 | 5250 |
| | | | | | | | | 5310 | 2520 | 6510 | 1320 | | 4400 | 5400 | 5150 |
| | | | | | | | | 5550 | 2600 | 6750 | 1400 | | 4350 | 5350 | 5100 |
| | | | | | | | | 6050 | 2800 | 7250 | 1600 | | 3200 | 5100 | 5000 |
| | | | | | | | | 6550 | 3000 | 7750 | 1800 | | 2700 | 4250 | 4250 |
| | | | | | | | | 7050 | 3200 | 8250 | 2000 | | 1400 | 2650 | 2650 |

(*) Data for wide-stance configuration with double front wheels.



Advanced LPG engine



Clear-view mast



Robust construction



Auto-style pedals

| | | FGC60K/FGC70K/FGC70K STC | | | | FGC60K | FGC70K | FGC70K STC |
|-------------|---------|--------------------------|---------|------------|----------------|----------------|----------------|------------|
| Mast type | h3 (mm) | h1 (mm) | h4 (mm) | h2/h5 (mm) | Q @ c=600mm kg | Q @ c=600mm kg | Q @ c=600mm kg | |
| Simplex | 2365 | 2150 | 3585 | 165 | 6000 | 7000 | 7000 | |
| | 3065 | 2500 | 4285 | 165 | 6000 | 7000 | 7000 | |
| | 3365 | 2650 | 4585 | 165 | 6000 | 7000 | 7000 | |
| | 3565 | 2750 | 4785 | 165 | 6000 | 7000 | 7000 | |
| | 4065 | 3000 | 5285 | 165 | 6000 | 7000 | 7000 | |
| | 4565 | 3250 | 5785 | 165 | 6000 | 7000 | 7000 | |
| | 5065 | 3600 | 6285 | 165 | 6000 | 7000 | 7000 | |
| | 5565 | 3850 | 6785 | 165 | 6000 | 6900 | 6900 | |
| 6065 | 4100 | 7285 | 165 | 5850 | 6700 | 6700 | | |
| Triplex (*) | 3765 | 2200 | 4985 | 980 | 6000 | 7000 | 7000 | |
| | 4365 | 2400 | 5585 | 1180 | 6000 | 7000 | 7000 | |
| | 4765 | 2525 | 5985 | 1305 | 6000 | 7000 | 7000 | |
| | 5065 | 2625 | 6285 | 1405 | 6000 | 7000 | 7000 | |
| | 5565 | 2800 | 6785 | 1580 | 6000 | 6850 | 6850 | |
| | 5925 | 2920 | 7145 | 1700 | 5850 | 6700 | 6700 | |
| | 6565 | 3200 | 7785 | 1980 | 5600 | 6500 | 6500 | |
| | 7115 | 3400 | 8335 | 2180 | 4300 | 4300 | 4300 | |
| | 7585 | 3550 | 8805 | 2330 | 2650 | 2650 | 2650 | |



User-friendly controls



Easy service access



Comfortable operator compartment

Steering system

- **Fully hydrostatic steering** with small and responsive steering wheel ensures precise, effortless manoeuvring.
- **Heavy duty boxed construction** protects steering cylinder from rough surfaces and debris.
- **Tapered roller bearings** support steer knuckles in axle housing, reducing maintenance and greatly improving durability.

Brakes

- **Vacuum-boosted brake system** provides true proportional braking for enhanced operator control.
- **Reserve vacuum** helps boost braking in the event of an unexpected engine stall or shutdown.

Hydraulics

- **Powerful hydraulic system** offers high residual capacities for comfortable handling of heavy loads.

Electrical and control systems

- **Seat switch** disengages drive function if operator leaves the normal seated position.

Operator compartment and controls

- **Market-leading ergonomic design** results in easy on-off access, user-friendly controls, a practical layout and great all-round visibility – for maximum precision and productivity.
- **Adjustable steering column** with unique, time-saving memory function helps guarantee optimum driving position, every time, and – together with open-step frame and grab bar – allows easy on-off access.
- **Short-throw hydraulic levers** give easy, precise control of mast operations.

Other features

- **RapidAccess features** give unequalled ease of entry to all areas for checks and maintenance.

Options include

- **Travel speed limitation**
- **Foot-operated directional control**
- **Non-marking tyres**
- **Dustproof kit for hydraulic tank and pump**
- **Rear-view mirror**

when **reliability** is everything...

Like any product bearing the Mitsubishi name, our materials handling equipment benefits from the huge resources and cutting-edge technology of one of the world's largest corporations. So when we promise you **quality, reliability** and **value for money**, you know it's a guarantee we have the power to deliver.

Every model in our comprehensive, award-winning range of forklift trucks and warehouse equipment is built to a high specification and is designed to keep on working for you... day after day... year after year... whatever the job... whatever the conditions.

To ensure your truck stays in constant productive action, we have a network of local dealers – hand-picked for their commitment to customer care... and backed up by the Mitsubishi Forklift Trucks organisation. No matter where you are, we have a dealer close by – ready and willing to meet your needs.

That friendly local service covers everything from identifying the perfect model and configuration for your application to providing competitive, flexible finance and maintenance packages, unbeatable warranties, long and short term hire, and highly responsive field service and repairs... as well as the industry's quickest and most reliable parts supply.

Only Mitsubishi can give you this combination of global engineering excellence and outstanding local support... only Mitsubishi offers you such a quality product at such an affordable price... and only Mitsubishi places reliability as high as you do in its priorities. Contact your local dealer now and see what Mitsubishi can do for you.

You can find your nearest dealer at www.mitforklift.com



CESM1462 (02/12)
© 2012 MCFE
Printed in The Netherlands

mitforklift@mcfe.nl www.mitforklift.com

NOTE: Performance specifications may vary depending on standard manufacturing tolerances, vehicle condition, types of tyres, floor or surface conditions, applications or operating environment. Trucks may be shown with non-standard options. Specific performance requirements and locally available configurations should be discussed with your distributor of Mitsubishi forklift trucks. Mitsubishi follows a policy of continual product improvement. For this reason, some materials, options and specifications could change without notice.